



MEETING SPACES GUIDE



FERNCLIFF

CAMP AND CONFERENCE CENTER

FERNCLIFF.ORG

Rest. Retreat. Renewal.

MEETING SPACES

From tranquil lakeside rooms ideal for restful retreats to outdoor pavilions perfect for larger events, we offer a diverse array of settings to suit every group's needs.



BROWN MEETING ROOM

Versatile Meeting Space | 39'x27' | 60 Max Occ.



CAB

Multi-purpose Facility | 50'x50' | 200 Max Occ.



CLARK ROOM

Executive Meeting Space | 16'x20' | 12 Max Occ.



DINING HALL

Lakeside Multi-purpose facility | 70'x44' | 210 Max Occ.



EVERGREEN HALL

Lakeside Multi-purpose facility | 52'x56' | 160 Max Occ.



FARMSTEAD PAVILION

Outdoor Pavilion with Picnic Tables | 40'x60" | 200 Max Occ.



GLENN ROOM

Lakeside Meeting Space | 37'x27' | 60 Max Occ.



J-MO TABERNACLE

Open-Air Space with Deck | 40'x50' | 200 Max Occ.



WILLIAMS LODGE MEETING ROOM

Williams Lodge Group Meeting Room | 37'x27' | 24 Max Occ.



INCLUDED AT NO ADDITIONAL CHARGE:



HIGH-SPEED
WIFI



AUDIO
VISUAL



PRESENTATION
MATERIALS





BROWN MEETING ROOM

The Brown Meeting Room, located in the Brown Center, is a spacious 39' x 27' conference room accommodating up to 60 guests in theater-style seating. It features two dry erase boards, a piano, and Wi-Fi, and can be divided into two smaller spaces with a retractable wall. A wrap-around porch with rocking chairs offers relaxing lake and picnic area views.



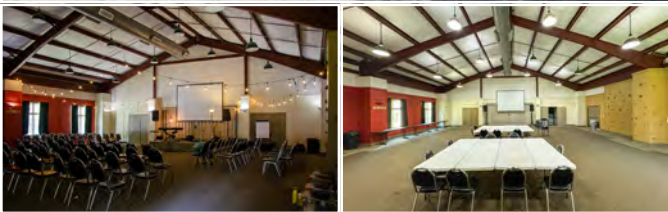
The room adjoins the Brown Center Lounge—a cozy 17' x 27' space with a fireplace and additional dry erase board—ideal for breakout sessions. A connecting kitchenette provides a refrigerator, microwave, sink, and coffee service area for guest convenience.



CHRISTIAN ACTIVITIES CENTER (CAB)

The Christian Activity Building (CAB) is a versatile, multipurpose facility ideal for large gatherings, comfortably seating up to 200 guests in a theater-style setup. Its spacious 50' x 50' main room features a bouldering wall, piano, sound equipment, and Wi-Fi, making it well suited for youth activities, worship, or conference sessions.

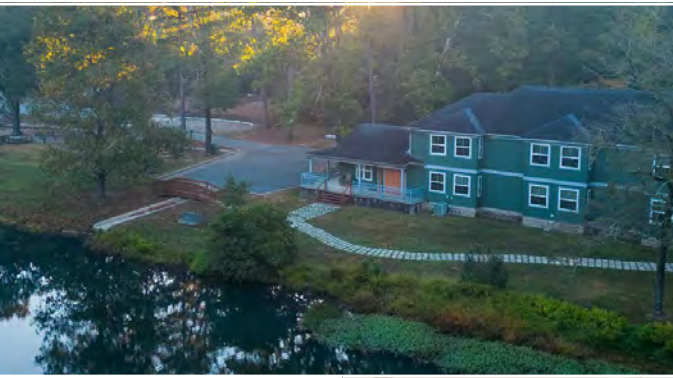
A connected kitchenette with a service window offers convenience for refreshments or meals. The building is fully handicap accessible and includes a large covered porch, a welcoming entry area with a water fountain, spacious restrooms, and a nearby breakout room for smaller group sessions.



CAB BREAKOUT ROOM

The CAB Breakout Room, located just off the main entry of the Christian Activity Building, is an 18' x 27' breakout space that comfortably accommodates up to 25 guests in a theater-style arrangement. Ideal for small-group discussions, workshops, or activities, this room provides a quiet, focused setting that complements the larger multipurpose space of the CAB.





CLARK ROOM

The Clark Meeting Room, located at the end of the Brown Center lodging, is a cozy lakeside space ideal for small gatherings and group discussions. Accommodating up to 20 guests in a theater-style arrangement, this room offers a comfortable setting with convenient amenities, including a kitchenette with a microwave and coffee service, a handicap-accessible restroom, and Wi-Fi.

A wrap-around porch overlooking the lake provides a peaceful backdrop, making Clark an excellent choice for intimate meetings, breakout sessions, or retreats of 8–12 participants.



DINING HALL

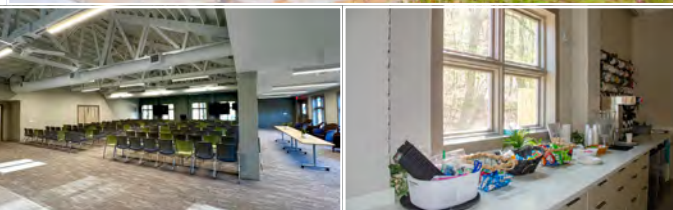
The Dining Hall is a spacious, centrally located 70' x 44' lakeside facility that accommodates up to 210 guests in round-table seating. With a stunning full-window view of Ferncliff Lake and a wrap-around porch lined with rocking chairs, it's perfect for both indoor and outdoor events.

The space features a buffet service line, AV equipment, and full handicap accessibility. Its inviting atmosphere and beautiful natural backdrop make it an ideal setting for banquets, receptions, retreats, and large group gatherings.



EVERGREEN HALL

Evergreen Hall, Ferncliff's newest renovated facility (formerly the PAC), is a spacious and versatile venue ideal for corporate meetings, workshops, retreats, or celebrations. This 52' x 56' space seats up to 160 guests in a theater-style arrangement and offers modern, comfortable furnishings with flexible setup options. Conveniently located near the Brown Center lodging and Dining Hall, Evergreen Hall features a stunning lake view, updated lighting, a coffee bar, and brand-new restroom facilities. The hall is wheelchair accessible and equipped with upgraded audiovisual technology and a high-speed fiber internet connection—making it an exceptional setting for a wide range of gatherings.

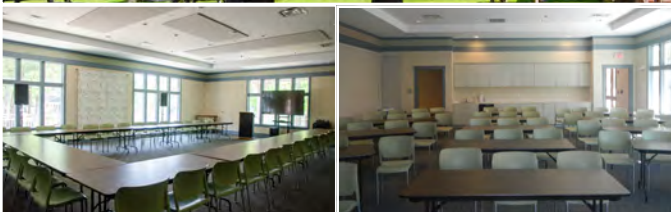




FARMSTEAD PAVILION

The Farmstead Pavilion is a spacious, open-air venue offering a beautiful view of Ferncliff's farm. Ideal for retreats, picnics, and special events, this versatile space comfortably accommodates up to 200 guests.

Equipped with ceiling fans and electricity, it provides both comfort and functionality for outdoor gatherings. Conveniently located restroom facilities nearby make the Farmstead Pavilion a welcoming and practical choice for large group events in a scenic, rustic setting.



GLENN ROOM

The Dining Hall is a spacious, centrally located 70' x 44' lakeside facility that accommodates up to 210 guests in round-table seating. With a stunning full-window view of Ferncliff Lake and a wrap-around porch lined with rocking chairs, it's perfect for both indoor and outdoor events.

The space features a buffet service line, AV equipment, and full handicap accessibility. Its inviting atmosphere and beautiful natural backdrop make it an ideal setting for banquets, receptions, retreats, and large group gatherings.



J-MO TABERNACLE

The Mosley Tabernacle is a stunning open-air venue overlooking Belden Pond, offering a beautiful blend of rustic charm and natural beauty. With seating for up to 200 guests in a theater-style arrangement, this spacious pavilion features a magnificent stone fireplace, natural-wood rafters, ceiling fans, restrooms, and water fountains for guest comfort.

The attached Anne Russ Deck provides an elevated view of the water, while the adjacent Big Deck offers additional space ideal for dances, picnics, or social gatherings under the stars. Nearby, the amphitheater and campfire ring create the perfect setting for vesper services, storytelling, or relaxed evening fellowship by the fire.



LET US HELP YOU PLAN YOUR NEXT EVENT.

Visit ferncliff.org or scan the QR code to get more information on how Ferncliff can help make your next event a success.

Jordan Lawson, Director of Group Sales

jordan@ferncliff.org | (501) 821-3063